

4 IN 1 HDD Docking Station for 2.5"/3.5" SATA HDD with Card Reader & USB Hub

User Manual

Declaration

Thank you for purchasing the LASER CASE-DOCK4IN1. Please read these instructions carefully before use.

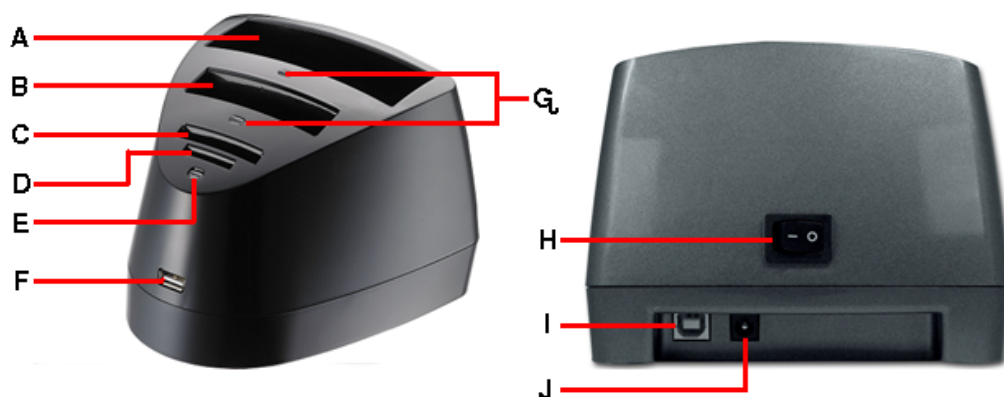
Notice

- Make sure that all cables are connected before turning the power on.
- Do not use the Docking station in extreme hot, cold, dusty or wet environments.
- Place the Docking station on a flat stable surface away from the edge.
- Do not remove hard drives or other devices from the Docking station if it is being accessed by the computer as this may corrupt data or damage the drive or device. Please use the Safe removal tool to stop devices before removal.
- Do not drop hard drives in the bays. Place them gently on to the connectors.
- Make sure that you are protected against static discharge before handling bare hard drives

Main features

- Plug and Play. No drivers required when used on Windows 2000 or later or MAC OS9 or later.
- Allows quick changeover of drives
- USB 2.0 High Speed interface
- USB 2.0 Host Port
- Stable base

Layout



	Description		Description
A	3.5" SATA /SATA II DRIVE BAY	F	USB HOST PORT
B	2.5" SATA /SATA II DRIVE BAY	G	HARD DRIVE POWER LED
C	CF CARD SLOT	H	POWER SWITCH
D	SDHC/SD/MMC/MS/XD	I	USB CONNECTION
E	POWER LED	J	DC POWER SOCKET

4 IN 1 HDD Docking Station for 2.5"/3.5" SATA HDD with Card Reader & USB Hub

User Manual

Connecting the docking station

Connect the supplied USB cable to the rear of the Docking station and the other end to a spare USB 2.0 port on your computer.

Connect the AC adaptor to a power point and to the socket on the rear of the Docking station.

Turn the power on at the wall and then turn the power switch on the rear of the docking station to the ON position.

With the power on, the computer should automatically detect the Docking station and locate and load the drivers. This may take a couple of minutes.

A new drive icon will be displayed in the My Computer Window. This icon represents the Card slots on the docking station.

Connecting a USB device to the USB host port will be the same as connecting directly to the USB port on your computer.

Connecting hard drives

Turn the Docking station off at the power switch on the rear.

Pick the Hard drive up and position the drive so the label is facing the front of the station and the drives contacts are at facing down.

Carefully lower the drive in to the correct bay and ensure that drive is fitted snugly in to the bay.

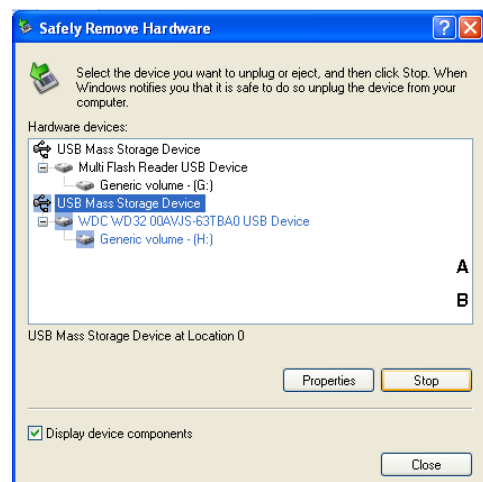
Turn the power switch on.

The computer should detect the station and the drive and assign the next available drive letter to the hard drive.

Removing the drives

To remove the hard drive from the docking station, use the "safely remove hardware" tool in the System Tray in the lower right hand side of the screen to unmount the drive.

Turn the Docking Station OFF and allow a minute or so for the hard drive to spin down before removing it from the station. Take hold of the drive and firmly pull directly upwards.



4 IN 1 HDD Docking Station for 2.5"/3.5" SATA HDD with Card Reader & USB Hub

User Manual

Using the card reader

Only one type of card or slot can be used at a time.

Turn the Docking station on and insert the card in to the correct slot.

The Card should be detected automatically and should be accessible through the My Computer Window.

Technical specifications

Model Name	4 IN 1 HDD Docking Station
Product Code	CASE-DOCK4IN1
Supported Drives	1 X 3.5" SATA / SATA II & 1 X 2.5" SATA / SATA II
Internal Interface	SATA
External Interface	USB 2.0
HDD Capacity	UP TO 1 TB
Support Cards	CF Series; CF TYPE 1, Normal CF, Ultra-II CF & Extreme III CF SD Series; Normal SD, Ultra II- SD & SDHC MMC Series; Normal-MMC & MMC-II(RS) MS Series; Normal MS & MS-G-ROM
HUB	USB Type A port x 1
Power Supply	Input = 240 VAC 50Hz Output= 12V DC 2.5A
Casing Material	Plastic
System Requirements	Windows 2000/XP/Vista and Mac OS 9.0 and above

Troubleshooting

Problem	Solution
No power to Docking Station	Check the AC adaptor is plugged in and the switch is on. Check the switch on the back of the Station.
Drive inserted in Docking Station but not shown on computer	Hard drives must be partitioned and formatted before they can be accessible by the Computer. Partition and reformat drive. Drive has been formatted with a non compatible file system. Reformat drive.
Hard Drive in Docking Station gets hot even when the drive is not being accessed.	Hard drives fitted to the Docking station are constantly spinning the platters. This is where heat is generated. Remove the drive from the Docking Station when not required.
Cannot access more than one card at a time.	This is normal. The card reader is on 1 bus. Please ensure that only one card is fitted to the slots at any time
Cannot find drivers for Windows 98/ME	Drivers for Win98/ME are not available. The use of the Docking station on operating system other than those specified is not supported.

4 IN 1 HDD Docking Station for 2.5"/3.5" SATA HDD with Card Reader & USB Hub

User Manual

Transfer rate is slow between 2 hard drives in the Docking Station	Transferring data between 2 drives in the station may be slower than normal as both drives are on the same USB Port. This may impede bandwidth.
--	---

Warranty

This product is covered by a 12 month warranty that protects against manufactures defects and faults. Using this product for purposes for which it is not designed for, Heat damage, Misuse, mistreatment, impact damage or damage by liquid penetration will void the warranty.

Support

Please check the troubleshooting guide before attempting to contact support.

Please forward all support enquires to support@laserco.com.au