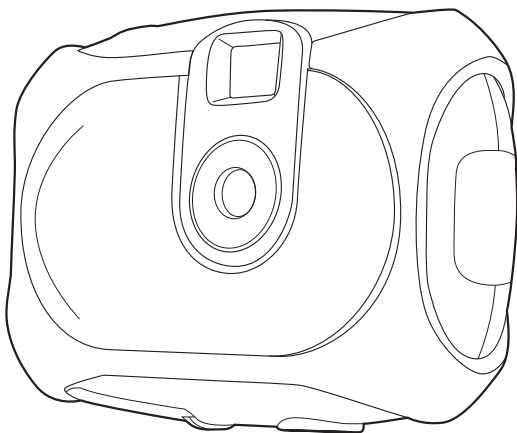




AO-DIGICAM06

User Manual



Please read carefully before use

LASER





AO-DIGICAM06 User Manual

INTRODUCTION

This dual-function camera takes photos and can also be used as a web-cam. With onboard 64Mbit SDRAM, photos can easily be downloaded from your camera to your computer via USB.

PRODUCT PACKAGE CONTENTS

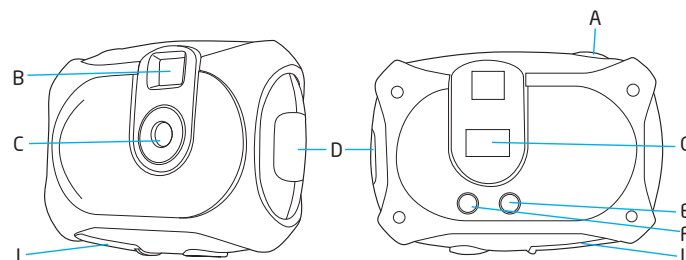
*Digital Camera *User's Manual *Software CD *USB Connector Cable

SYSTEM REQUIREMENT

- > Microsoft 2000/XP O/S and above
- > 125MB or above free hard disk space & 32MB or more RAM
- > Colour Monitor (800*600 24 bit or above)
- > Available USB port and CD ROM

DIGITAL CAMERA LAYOUT

- | | |
|---------------------------|--------------------|
| A. Start / Shutter Button | E. Delete Button |
| B. View finder | F. Function Button |
| C. Lens | G. LCD |
| D. USB port | |





AO-DIGICAM06 User Manual

INSTALL BATTERY

Open the battery compartment and insert the battery

Note

Battery power is not needed when connected via USB. For best images use at a distance greater than 30cm

Warning

Ensure all photos have been removed before changing the batteries. Once batteries are removed all photos will be deleted. Remove batteries when unit is not in use for extended periods. Please dispose of batteries thoughtfully

POWER SAVER STATUS



This unit has a 60 second auto-power off feature. Once turned on, the camera will automatically turn off after 60 seconds of inactive use.

SOFTWARE INSTALLATION

Please do not connect the camera while installing software. Insert the CD disk and select the install items as needed below.

1. Install Photo Impression
2. Install Funhouse
3. Install Driver
4. Browse Contents of CD-ROM
5. Exit

If the auto installation fails, insert the driver disk, and run the driver program autorun.exe manually. Then follow the directions of the installation wizard.

TAKING PHOTOS

Always use fully charged batteries for best performance. Load the batteries and hold down the shutter button until the power-on beep is heard. "000" will display in the LCD. Use the optical viewfinder. Hold the camera steady while pressing the shutter button. A beep will indicate a photo has been taken. When the camera is full and you press the shutter button a continuous beep will sound.

Tips

When taking photos, a quiet beep sound will indicate errors, such as low batteries. Other conditions such as lighting will also affect picture quality.

CAMERA FUNCTION CONTROL


- > **Delete single photos:** Press the function button until indicated this mode is on the LCD. Press the shutter button once within 5 seconds to delete the last photo taken.
 - > **Delete all photos:** Press the function button until this mode is indicated on the LCD. Press the Shutter Button once within 5 seconds to delete all the photos stored in the camera.
- 

PHOTO RESOLUTION SELECTION

Resolution status will be shown on the LCD display in small characters. You may select between "Hi" and "Lo" resolution. "Hi" SXGA mode 1280*960 pixels and "Lo" VGA 640*480 pixels. To switch between "Hi" and "Lo" use the function button. Hi mode will allow approx 30 photos and Lo mode about 104 photos.

PHOTO STORAGE

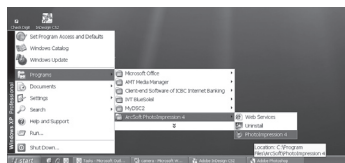
The LCD display will always show the resolution status and number of photos taken unless the Select button is pressed. Note: Each time you change the resolution, the number of photo you have taken will not change

AO-DIGICAM06 User Manual

PC TRANSFER

Connect your camera to your PC via USB cable. A beep will sound once connected.

Install Driver from CD, then run it from Start > Program > MyDSC2, to access photos



Or Install Photo Impression 4 from CD, then run it from Start > Program > ArcSoft Photo Impression. Then click "Get photo", click "Camera/Scanner" to get photos



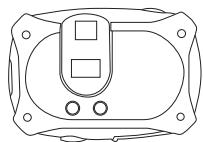
Double-click the Photo Impression 4 icon on your desktop (per the previous install instructions). Select the Camera/Scanner menu-bar icon at the bottom of the screen. This will automatically set your source to the Dual Camera and your album to PI. Select the acquire icon. This will start the image acquisition and picture display as a thumbnail in the photo holder. To see in more detail, select the photo of your choice.

SPECIFICATIONS:

Type	COMS Sensor 300K Pixels
Interpolation	1.3 MP
Image Resolution	1280*960 Pixels (SXGA) 640*480 Pixels (VGA)
Memory Device	Built-in 64M bits (SDRAM)
Memory Capacity	56 x SXGA, 210 x VGA
Shutter Speed	1/6-1/15000 seconds
Shoot Mode	Single/Continuous/PC Camera
Image Process	Automatic Exposure/Automatic White Balance
Working Voltage	AAA 1.5V or USB 5V
Transmission interface	USB 1.1
Working Temperature	0-40°C
Operating System	2000/XP or above



LASER



Digi Snap
Digital Camera

For technical support please visit
www.LaserCo.com.au