



Contents

Precautions	4
Characteristics	5
About the Player	7
Screen Description	8
Basic Operation	9
System Menu	11
Listen to Music	13
Play the video	15
Voice REC	16
Navigation	17
Photo Browser	18
FM Tuner	18
Text	20
Game Function	21
USB Disk	22
Convert Video File	23
Upgrade Player Firmware	25
Troubleshooting	28
Specifications	29

Precautions

This manual contains important safe measurements and correct operational information, so please read all the information carefully before you use the device in order to avoid any unexpected accidents.

- Do not put the player in the condition of high temperature, humidity or dust.
- Do not put the player in high temperature place (over 40°C), especially not in the cars with window closed in summer.
- Do not knock or hit the player, especially do not shake TFT screen in order to avoid TFT being damaged or displayed abnormally.
- Select suitable volume, turn down or stop use when you feel tingle in ears.
- Battery service life may be various from different using conditions, manufacturer and manufacturing time.

Precautions

- Do not disconnect the player abruptly during the formatting or uploading and downloading, otherwise, it will cause the program error.
- We will not be responsible for any obligation for any memory loss caused by product damage, repair or other reasons. Please operate correctly as per the manual.
- The player, no matter is powered on or not, once connected with the USB port of started computer, can be charged.
- Do not dismantle the player personally or use alcohol, thinner or benzene to clean the surface of the player.
- Do not use the player in the electronics-prohibited area, such as in the plane.
- Do not use the player when driving or walking in order to avoid traffic accidents.
- Please charge in the following conditions:
 - A. Battery electricity icon displays no electricity.
 - B. Further power on the player when the system is powered off automatically, but it powers off soon.
 - C. No response with the pressing keys.

※Our Company reserves the right for the improvement of the product. It is subject to any change on the specifications and designs without further notice!

Characteristics

2-inch real colored TFT display

Multi music formats as MP3, WMA, good timber and real audio frequency display

MPEG-4 video format play, full-screen play display, exterior-sound speaker play

High-definition JPEG picture browse function

Fm Tuner function, can store 20 stations at the most

Built-in hi-fi 8 Ohm speaker

Digital record

Energy-saving setting, brightness adjustable, customerized power off time

Good timber, support 3D EQ surrounding effect, customerized EQ

Support multi languages, support Chinese and English

USB2.0 ultra-high speed transmission as 4M/S

Listen to music while reading E-book, with bookmark function

Listen to music while playing games

Portable U-disk function, support Firmware Upgrade

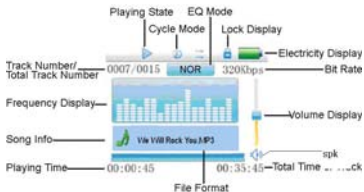
A-B repeat function

About the Player



Screen Description

■ Music Play



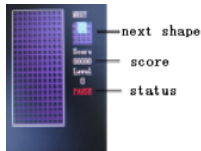
■ REC Mode



Screen Description



■ Game




■ Picture Browse/E-Book/Resources Manager







Basic Operation

■ Power On/Off

Power On:

Push the power switch to ON position, long press  key for 3 seconds, the player will display the Boot interface and enter the working mode.

Power Off:

- In Play state: short press  to pause, long press  for 3 seconds to power off.
- In Play state: long press  for 3 seconds to power off.
- In other modes: press  for 3 seconds to power off.
- The system will power off automatically if the battery is not enough.

■ Power Reset



If your player is blocked during the using, you can push [ON/OFF] power switch to restart the player.

■ Connect to Computer and Data File Transmission

After starting the computer, you can connect the player to computer via USB cable to achieve the USB power supply or USB data transmission. When the player is connected to the computer via USB port, it can be used as a U disk. It requires you to copy your favorite music or data into MP3.

Basic Operation

■ Volume Control

You should press the “VOL” until the red speaker icon is flashed at the corner of the right side in the screen, then press  and  to adjust the volume.

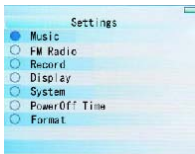
■ Main Interface

After entering the Main Interface, select your desired option among [Music]/[Video]/ [FM]/[Photo]/[Text]/[Record]/[Navigation]/[Game]/[Settings] circularly by pushing leftwards or rightwards, and short press the "M" key to enter the option menu, long press [M] key to exit the submenu and return to Main Interface

System Menu

■ Settings

In Main Interface, push leftwards or rightwards to select [Settings] option, short press "M" key to enter Setting interface (shown in right bottom), and select the sub-option to be set by pushing Leftwards or rightwards .



● Display

- ①Blight time: six options of 5 sec., 10 sec., 15 sec., 20 sec., 30 sec., and always on.
- ②Lum: five options of +1, +2, +3, +4 and +5, the higher level, the more bright.
- ③Blight mode: two options of Normal and Power Save modes.

● System

Four sub-options: Language, about, Upgrade and Default set.

- ①Language: three options of Simplified Chinese, Traditional Chinese and English

System Menu

②About: player storage memory, remain memory and system software version no., these information are read-only, short press [M] key to exit.

③Upgrade

Eject out the dialog box in this menu, it reminds you whether to upgrade the firmware, it will exit if no firmware upgrading.

⑤Defaulted Set

In this menu, eject out the dialog box, confirm whether to resume the defaulted value, select “Yes” or “No”.

- PowerOff Time

In this menu, there are six options of Power: Off, 3 min., 5 min., 10 min., 15 min. and 20 min.

- Format

In this menu, eject out the dialog box, confirm whether to format the player, select “Yes” or “No”.

Listen to Music

■ Play/Stop

In Music Play menu, connect the earphone with player, select the desired song file by pushing leftwards or rightwards key, then short press **▶■** key to begin the playing, then short press **▶■** key to pause, operate it circularly. During the playing of music, the interface has real audio frequency display, e.g., for the file with LRC file, behind the frequency is the Synchronous Lyric.

■ Lyric Display

The player only supports the Lyric Synchronous Display that the file shares the same name as LRC file of MP3 format, e.g., music file is named as “Angel.mp3”, the LRC file must be named as “Angel.lrc”, what’s more, they have to be in the same directory.



■ Music Play Setting Menu

In Music Play state, long press “**M**” key to enter Main Menu and enter the “Music” in “Settings” option, there are multi options, push Leftwards or rightwards key to shift to the desired setup menu. After your selection, press “**M**” key to confirm.

■ A-B Repeat function

In Music Play state, short press “**VOL**” to begin the repeat at the first time, “A” will display on the screen; short press “**VOL**” to end the repeat at the second time, A-B will display, the player will repeat between the beginning point and the ending point. Short press “**VOL**” to quite the repeat

Listen to Music

function at the third time. It's unavailable to using repeat function when the music is at pause situation. Long press  and  keys for fast ward playing or back ward playing at fast ward the “A” or “A-B” situation.

1. Repeat Mode
 - a. Once Stop after playing song.
 - b. Repeat 1 Repeat playing a single song.
 - c. Folder once Stop after Playing all the songs in the folder.
 - d. Folder repeat Repeat play all the songs in the folder.
 - e. All once Stop after Play all the songs.
 - f. All repeat Repeat play all the songs.
 - g. Intro Play all the songs of the first 10 seconds in the current folder.

2. play mode
order
shuffle

3. EQ Setup

Normal/3D/Rock/Pop/Classic/bass/Jazz/User EQ, the above eight options will bring you different music effects.

4. you can edit your favorite EQ effect by [User EQ set] option. The operation is done by leftwards, rightwards, [**M**] keys

Listen to Music, Play the video



play the video

In video paly menu, select the desired video file by pushing leftwards or rightwards key, then short press **[M]** key to begin the playing, then short press **[M]** key to pause, operate it circularly.



Voice REC

■ Voice REC

In Main Interface, enter Record state, short press “M” key to start recording, short press **▶■** key to pause recording, short press **▶■** key to save the recorded file and enter next Record preparation state. Long press [M] key to save the record and exit the REC mode.



■ REC Setup

In Stop state of REC mode, long press [M] key to exit the Main interface, and enter [Record] option, adjust the settings among [REC Quality]/[REC Volume]/[CHECK SW].

1. REC Quality: high quality, common quality (the first one has larger REC file and better effect; the second one is in the opposite)
2. REC Volume: five options of +1, +2, +3, +4 and +5. The higher level, the larger recorded volume.

*The recorded voice files can be found in Music Play menu and played to try the effect.

*If the screen displays “Full Space”, it indicates that there is no space for new recorded file, please delete other files to release more space.

Resources Manager

■ Navigation

Resources manager is one of the function characteristics, it can make you know the inside file type, structure and contents more clearly, for convenient management and search of the file content in classifications .



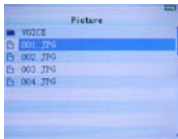
■ Delete File

In Resources Manager, you can select music or video files, long press **“VOL”** key to display delete Dialog box, select **“Yes”** to delete and **“No”** to cancel. After the selection, short press **▶■** key to implement the selected option.

Photo, FM

■ Photo

In Main Interface, short press **MENU** key to confirm to enter Picture Browse mode
Push Leftwards or rightwards key to select the previous or next picture.



■ FM

Enter FM menu,.Press Mode key to select: Manu,Auto,Mem,Pres,Del



Manu: short Press [M] Key to confirm, press leftwards or rightwards to change the frequent manually, long press [M] to exit.


FM

Auto: Press [M] to enter, the player will automatically search, after search will display. prese CH XX, Press leftwards or rightwards to select the station.

Mem: press [M] key to enter, press leftwards or rightwards to select the stations, press [M] to confirm store, the frequent display on screen will replace the frequent that stored before. First Short press [M]to exit memory, then long press MENU to return FM menu. pres: Press [M] key to enter, press leftwards or rightwards select the stations that stored in the player.

Del: press [M] key to enter, press +or _ to select the station that you want to delete, press [M] the confirm, after delete the station's frequent will display "empty", First Short press MENU to exit mem,then long press [M] to return FM menu.

FM record :

When you listen the FM music, long press "VOL" key to enter FM record mode, short press  key to record and pause selecting, short press [M] key to store the Music as file and exit FM record mode.

Note:

In FM mode, the earphone is using as antenna, so please keeping the earphone is connected well.

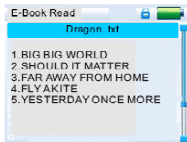
TEXT

■ Download TXT File

Connect the player to computer, select the desired file to download and save the file as TXT format in portable disk.

■ Read File

In Main Interface, enter Text option, push leftwards or rightwards key to select the desired file to read, then short press [M] key to read. Turn pages by pushing leftwards or rightwards key, turn rows by pushing ◀ and ▶ key.



Game

■ Built-in Intellectual Game: Russian Diamond

In System Menu, enter Game mode, short press [M] key to enter Game Setup Interface.

■ Keys Description

Russian Diamond is operated in horizontal, short press [M] key to shift between Start and Pause functions, push leftwards or rightwards to control the movement of diamonds. Press [M] to change the shape. Long press ⏪_key to fall down quickly, short press ⏩ key to fall down directly. Long press [M] key to exit.

USB Disk

■ USB Display Mode

The player has a high-speed USB2.0 port with the transmission speed of 5M/S, and is a standard USB disk, supports the systems including Windows98 (it needs to install the driver), over Windows2K (it's unnecessary to install the driver), Mac OS 10.3 and over, Linux Redhat 8.0 and over. It supports USB power supply and can be played without battery. After connecting to the PC (several seconds later), the player will display the On-line mode shown



■ Charge Display Mode

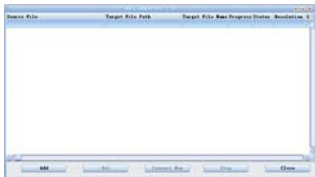
If the battery is too low, the display will show “Low battery to power off”, then the player will be powered off automatically. You can use the attached charger to charge the battery. It requires 3~4 hours to charge fully the battery (note: for the firstly three times, you have to charge for 10~12 hours).



Convert Video File

This player can convert the WMV, RM, AVI, VOB or DAT into AVI video format via the attached video convert software.

1. Click and run the program of “AV Converter.exe”, select your desired video file and AVI video file routine to be generated, shown as follows:



2. Select and set your desired parameters, click [Start to Convert] button, then begin to convert to AVI file.




Convert Video File

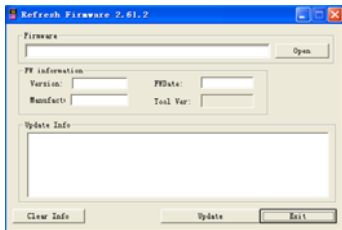
- The successfully converted AVI video file can be played in MP4 player. During the operation, enter Video Play menu, select the corresponding file, short press [MODE] key to play in video, long press to exit (the Video Play interface refers to the Screen Description).



Upgrade Player Firmwar

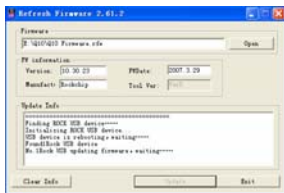
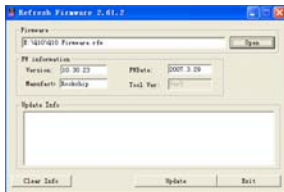
The player can upgrade or resume the damaged player firmware via the tool software in the attached disk.

1. For the first upgrading of computer, insert the drive disk into the CD-ROM of computer, then connect the MP4 player with computer (it requires you to press and hold the  key), till it appears the program Installation Interface.
2. Implement the next step according to the Dialog box prompt, and select the “Upgrading Tool” folder in the attached disk in the “Browse” option of the fourth Dialog box, then click Confirm.
3. Operate as per the prompt in dialog box till the accomplishment.
4. When the installation of programs required by computer is OK, you can begin the upgrading; select and run the firmware upgrading tool Consumer.exe (can be found in attached disk), then open the option and select Rock2*. rfw file (the Interface is as follows).

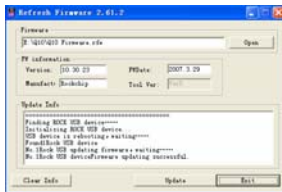


Upgrade Player Firmware

5. Connect the player to PC via USB cable (press and hold the **▶■** key before the On-line operation), then click [Burnt Firmware] till the Auto Upgrading is achieved.



Upgrade Player Firmwar



Note: Firmware upgrade is to improve and optimize the performance of the player. The normal work of the player would not be affected even if the firmware isn't upgraded. The wrong operation of upgrading firmware would cause the device not to work normally! The firmware upgrade software of this player is not applied to other series of players..

Troubleshooting

If the player can not be played normally, please check as follows:

Troubles	Causes
It cannot be turned on	Check whether the player is powered on or not and whether the machine program is damaged or not
The player is blocked	Push the power switch to restart the player
It can not be played	Check whether the machine is powered on or not Confirm the volume is not in "0" level, check the earphone is connected well and keep the earphone clean Format the disk again
It can not upload/download the file or the disk can not be found in computer	Insert USB cable totally well after the Power on. Correctly install the driver again.
It can not be recorded	Check the enough memory and the electricity
Words on display are deformed	Make sure that you have selected the correct language
It can not be used normally after upgrading	Upgrade again in Windows 2000/Windows XP

Product Specifications

Items	Specifications
LCD display	real colored TFT display, Diagram (220*176)
Language support	Multiple languages
Data transmission speed	High speed USB2.0 (about 4M Byte/s)
Supportable file format	Music: MP3, WMA; Record: WAV; Picture: JPEG
Supportable video format	AVI, RM, VOB, DAT, RMVB (All should be converted)
SNR	85dB
Max. output power	10mW(left) + 10mW (right) (32 Ohm)
Storage media	Embedded Flash memory 128MB-4GB
Power supply	3.7V polyether battery
Usable time of battery	Video play: about 4 hours MP3 play: about 6 hours Voice REC: about 8 hours
Working temperature	5°C to 40°C
Supporting operating system	WINDOWS 2000/XP
Accessories	User's Manual, earphone, USB cable, installation CD disk

Note: the specification and design shall be subject to change without any further notice!