

Please click on the questions below that best fits your situation for the answers or scroll down the page.

This page can be downloaded in PDF format [here](#)

- Q:** I have just got my Laser Personal Media Player, how do I connect it to my computer?
- Q:** How do I copy files to my player?
- Q:** Can I put all my music files in separate folders?
- Q:** What music files will the MVP2 player play?
- Q:** The screen on MVP2 player goes black after a while. Is there a problem with it?
- Q:** The MVP2 player turns itself off when I am trying to navigate my way through the menu. Is faulty?
- Q:** Can I copy my records and CD's to use on my MVP2 player?
- Q:** So how do I copy music so it can be played on my MVP2 player?
- Q:** I have downloaded tracks from iTunes and when copied to the MVP2 player they do not show up. Why?
- Q:** I am getting sound from one side of my earphones only. What should I do?
- Q:** The sound quality from the music is poor. What is the problem?
- Q:** My MVP2 has an FM radio. Why will not pick up stations?
- Q:** In the manual it says that I can update the firmware of the MVP2 player how do I go about this?
- Q:** I try to copy file to the player from my computer but I get an error message stating the "Disk is Write Protected." What is going on?
- Q:** When I try to access the Music feature of the player I get the message "Disk Error" What can I do?
- Q:** The player will only play the first 10 or 12 seconds on the song and then starts the beginning of the next track. What is wrong with my player?
- Q:** How do I recharge my MVP2 player?
- Q:** What picture can be displayed on the MVP2 player?
- Q:** How can get video files on to my MVP2?

Q: The time is reset whenever I turn the MVP2 off. Is there fault with the MVP2?

Q: I have just got my Laser Personal Media Player, how do I connect it to my computer?

A: All Laser Personal Media Players will connect to computers running Window 2000 and later without the need for drivers to be installed on the computer. These Operating systems have native drivers that should load as soon as the device is plugged in to an active USB port. The player will be displayed in the "My Computer" Window as a removable device. The player can now be access as you would any other drive on your computer.

Q: How do I copy files to my player?

A: Once the player is connected to the computer you can copy files to the player from your computer as you would any other drive or folder on your computer. Files and folders can be copied, moved, or deleted on the player the same way they are on the computer hard drive.

Q: Can I put all my music files in separate folders?

A: Placing files in separate folders is a good idea because it helps the player search and display the files on the screen. Placing all the files in the root directory or in just one folder can cause the player to slow down when trying to display all the files.

Q: What music files will the MVP2 player play?

A: The Laser range of MVP2 players and personal media players will only play file in the MP3 or WMA format and only files that are not copy protected. Files downloaded from "Pay per Track" sites are usually copy protected and will result in an error message being displayed when you try to play back the track. Please check with "terms and conditions" on the download site before attempting to transfer your downloaded files to the MVP2 player. We are not able to provide information on removing any copy protection in any way

Q: The screen on MVP2 player goes black after a while. Is there a problem with it?

A: This is a power saving feature of the MVP2 player. The biggest drain on MVP2 Player batteries is the LCD screen. In most cases the screen is set to go off after a preset time to help with battery endurance. The display can be returned by simply pressing on of the control buttons. Please refer to the manual to change this setting.

Q: The MVP2 player turns itself off when I am trying to navigate my way through the menu. Is faulty?

A: As with the question above, this is a power saving feature. It is usually set to turn off after a preset time from the last button press if none of the features are being used, such as Music playback. This is to help the player retain the battery life and not go flat if it is forgotten to be turned off.

Q: Can I copy my records and CD's to use on my MVP2 player?

A: In Australia, as long as you own the record or CD and it is intended to be used on devices that you own only, then yes you can. More detailed information about this can be found the following website <http://www.copyright.org.au/information/specialinterest/music.htm>. Look for the link **Music: copying MP3s, CDs, & audio Cassettes**. You can download the information in PDF format. This

document also covers copying Vinyl Albums and singles. Please respect the Copyright laws in your area.

Q: So how do I copy music so it can be played on my MVP2 player?

A: Most computers now come with software that can be used to convert CDs to MP3 format. On Windows based computers the program is called Microsoft "Windows Media Player." This program can be used to listen to CDs, MP3's, watch Video files, and of course convert your Audio CDs to the MP3/WMA format used by your Laser personal media player. For detailed information on how to convert your CD's start the program and press the "F1" key on your keyboard. Select the "Index" tab and the type in "Ripping" in the search field. You will be shown detailed instructions on converting you CD to MP3. Please ensure that the "ADD COPY PROTECTION" option is the setting is turned off to ensure the files can be played on your player. Please refer to the previous question about Copyright issues.

Q: I have downloaded tracks from iTunes and when copied to the MVP2 player they do not show up. Why?

A: Unfortunately iTunes tracks present a couple of problems with the Laser personal Media players; Firstly, the format of tracks from iTunes are in the ACC format. This means that file will be "TRACKNAME.ACC" this format is not compatible with Laser personal media players as it will not be detected by the player when it has been copied to it. While they can be converted to the MP3 format using the iTunes software, there is still the problem of the copy protection. Just about all tracks downloaded from iTunes are copy protected and can only be used on the computer that the file was downloaded to or devices that is DRM (Digital Rights Management) capable. We cannot offer any information on removing any copy protection.

Q: I am getting sound from one side of my earphones only. What should I do?

A: Please check that the earphones plug is fitted firmly in to the socket. Some it can works its way out slightly and simply needs to be seated correctly. If after trying that the results are the same, please test the player with another set of earphones. This will determine if the player is faulty or the earphones are the problem. The Laser MVP2 player uses standard 3.5MM Stereo earphone jacks. Replacement sets can be purchased at a variety of places.

Q: The sound quality from the music is poor. What is the problem?

A: There are a couple of reasons for poor quality playback. The most common reason for this is poor encoding of the music file. Check the playback quality of the file on your computer, bear in mind that the difference between hearing the playback through speakers and through earphones. It is also possible that the earphones are beginning to degrade from use. This is normal for earphones and they will not last forever. Please replace them.

Q: My MVP2 has an FM radio. Why will not pick up stations?

A: MVP2 players and personal media players fitted with FM radios use the earphone lead as the antenna. The earphones need to be fitted to the player before you can tune the radio to the station. Please ensure that you are in a good reception area before you attempt to tune the radio. If the signal is weak it may not be strong enough to be "Auto tuned" but strong enough for listening too. Tune the radio in a good reception area and store the stations. These can then be selected in other locations. The internal speaker cannot be used when using the FM radio as the earphones *must* be fitted for this feature to be used.

Q: In the manual it says that I can update the firmware of the MVP2 player how do I go about this?

A: Firmware is written specifically for each model MVP2 player. Firmware updates released by the factory will be posted on the website when and if they become available. Firmware is released to overcome reported issues and usually do not add any new feature to the player. While the firmware

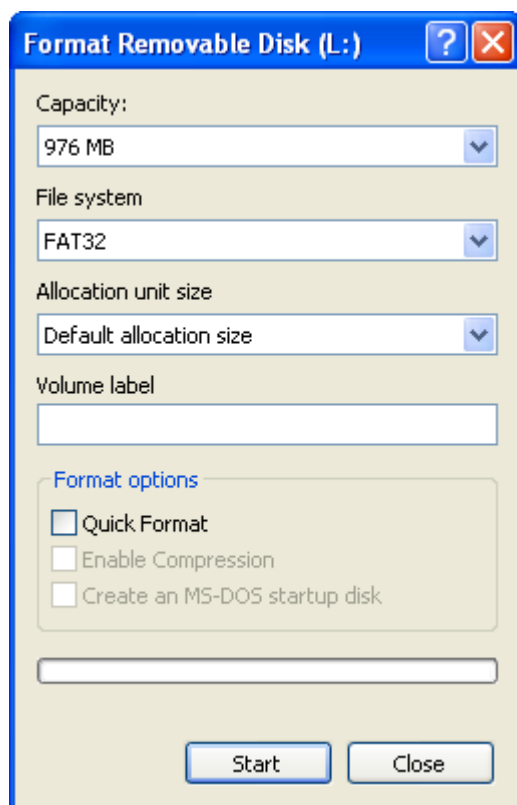
version shown on the player may be very similar to versions on other brands and types of players, the firmware on each model player has distinct aspects that need to be account for in the firmware. Downloading and installing firmware on a Laser MVP2 or Personal Media Player that has not been posted on our website specifically for a particular model may render the player inoperable and will void the warranty on the Player.

Q: I try to copy file to the player from my computer but I get an error message stating the “Disk is Write Protected.” What is going on?

A: Some model MVP2 players have a “lock” switch on them. This switch is designed to “lock out” the buttons to ensure that the buttons are not pressed accidentally if the player is in your pocket or bag when in use. This switch also acts as Write Protect switch to ensure that any data on the MVP2 player is not accidentally erased. Please check the position for the switch and move to the “Unlocked” position and reconnect to the computer.

Q: When I try to access the Music feature of the player I get the message “Disk Error” What can I do?

A: Due to the nature of the memory used in MVP2 players in general, it is possible form time to time that the FAT (File Allocation Table) can become corrupted. This sometime happens if the player has been removed from the USB port while data was still being transferred to or from the player. Another cause is a static discharge to the chipset. In most cases the problem is simply resolved by reformatting the player. IF using Windows 2000, XP, or Vista, please connect the player to the computer as per normal. Open the “My Computer” window and then “Right click” on the drive icon that represents the player connected to your computer. Select “**Format**” from the options menu as shown below.



Options:

Capacity: This displays the capacity of the player in Megabytes. It should be left as displayed on your computer.

File System: Allows you to choose the files the player is formatted in. FAT or FAT32 is the recommended files system for most personal players.

Default allocation size: This option should be left as “Default allocation size”

Volume label: Enter a volume name of up to 11 characters that will be displayed in the “My Computer” window when connected. If left blank it will be displayed as “Removable Disk”

Format Options: Only the “Quick Format” option should be available for personal media players of this type. This option only removes and rewrites the File Allocation table when formatting. The data is still on the drive and can be recovered with the use of special software. It is recommend to leave this option uncheck when formatting removable devices such as personal media players.

When all the options are correct, click on the “Start” button to complete the format process. Be aware that formatting the player will remove all data stored on it. Please ensure that, if possible all data is backed up before formatting your player.

Q: The player will only play the first 10 or 12 seconds on the song and then starts the beginning of the next track. What is wrong with my player?

A: Your player is set to "Intro Mode" This mode will only play the first few seconds of the song before going on to the next track. Please change the playback settings as shown in the manual to "Normal". This should fix the problem.

Q: How do I recharge my MVP2 player?

A: The battery can be charged by simply connecting the MVP2 player to the computer via the USB port on your computer and turning the player on. The player will charge as long as there is power to the USB port. The computer must remain on during the charging process. The process will take about 4 to 5 hours to charge the player.

Q: What picture can be displayed on the MVP2 player?

A: The Laser MVP2 players can display pictures in the BMP and JPG format. It is a good idea to resize the images that you are transferring to the MPV. The larger the image file that the player is to display, the longer it will take to process. Reducing the size of the image file will also help with the storage space required for the files.

Q: How can get video files on to my MVP2?

A: The Laser MVP2 player requires all video files to be converted to the AMV format before being transferred to the player. The required software is installed on your computer when the player utilities are installed from the included CD. Open the AMV Converter Tool from the program group "MP3 Player Utilities." When the program is open press the "F1" button on your keyboard to open the help file for detailed instructions on how to use the software. The following tips may be helpful.

- It is easier to convert the video files on your computer and then transfer them to the MVP2 player.
- Check the converted file for playback on your computer before transferring to the MVP2 player.
- Ensure that all the required Codec's are installed on your computer before converting the video file.
- The Converter Tool cannot convert any video file that is copy protected. This includes DVD files.
- Check the settings to ensure that the correct aspect ratio is used for the conversion. This may require trial and error as different video sources may have different results.
- Check there is enough space on the MVP2 player for the converted file or files before transferring to the player.

Q: The time is reset whenever I turn the MVP2 off. Is there fault with the MVP2?

A: The Laser MVP2 player can be turned off in 2 ways.

1. In day to day use the best way to turn the player off is to press and hold the "Play" button for about 3 seconds. This acts as a "Saved State" mode for the player. If you are in the music playback mode and you wish to turn the player off for short period, press and hold the "Play" button and the MVP2 will turn its self off. To turn the player on again, press and hold the "Play" button and the MVP2 will turn its self on returning you to the last point that the MVP2 was in. Turning the MVP2 off in this way will retain the time settings.
2. If the player is not to be used for a long period, it is recommended that the player be turned off using the ON/OFF switch. Turning the player off in this manner will lose the time setting and it will need to be re-entered if required. When you turn the player back on again you will always start at the main menu.