

## ***Preparing A New Hard Drive For Use In A External Case.***

*If you are not sure that you are capable of following the instructions below, We recommend that you do not proceed as mistakes could case damage and loss of data on your PC.*

Before any hard drive can be set for use in an external case it is necessary to verify which File system eg. FAT16, FAT32 or NTFS will be used

With the Windows ME Operating system or lower, FAT32 is required. FAT32 partitions are limited as they cannot store files greater than 4GB in size.

## ***Fitting The Hard Drive To The External Case.***

As with any computer accessory, the accompanying documentation should be read fully before use. Confirm that the hard drive will fit the case and that all mounting hardware is present.

Refer to the documentation for the hard drive jumper settings. This is usually printed on the hard drive label. Ensure the jumpers are set to the Master position as the hard drive may not work correctly otherwise.

Mount the hard drive in the case and ensure the power plug (no power plug required for the Notebook hard drive enclosure) and the data cable is fitted to the hard drive correctly and firmly (do not use force). Close and secure the case with the supplied hardware.

## ***Setting Up The Hard Drive For Use With Your System.***

**For Windows XP, Windows 2000 and above:**

**For 3 ½ inch Hard Drive Enclosures: (Standard Desktop hard drives)**

Confirm that the switch on the unit is in the OFF position. Plug the AC power adapter in to the case and into the wall socket.

Connect the Unit and the PC using the USB cable supplied.

Turn the PC on and let it boot normally.

Upon completion of the startup procedure, turn the external drive unit on.

Do not move the hard drive case while the power is on and plugged in to the computer as this could cause data loss or damage to the hard drive.

### **For 2 ½ inch cases (Notebook hard drives)**

Turn the PC on and let it boot normally.

Connect the Unit and the PC using the USB cable supplied.

Do not move the hard drive case while the power is on and plugged in to the computer as this could cause data loss or damage to the hard drive.

### **Driver Setup**

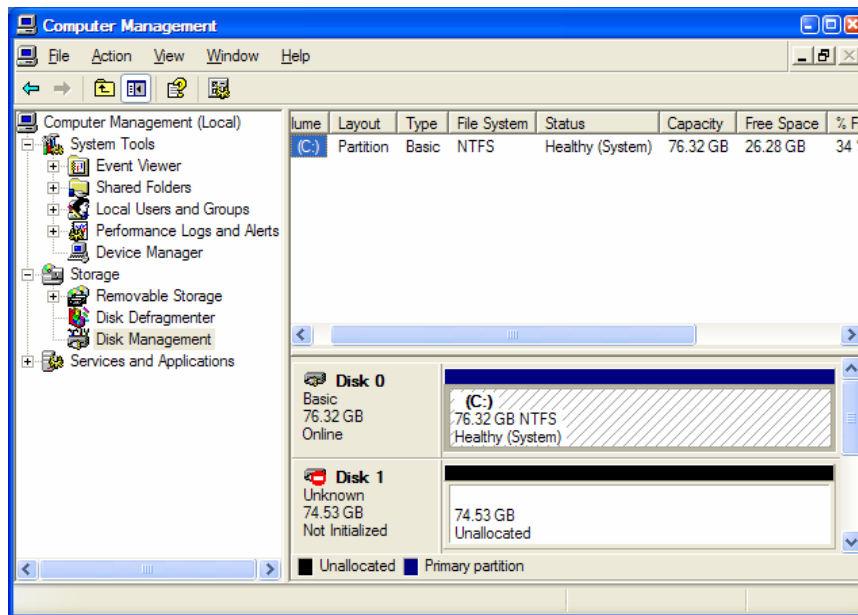
An icon should appear in the system tray on the lower right hand side of the screen. Double clicking on this icon will bring up a window showing attached USB devices on your computer.

If the drive being used has already been partitioned and formatted, it is ready and no further preparation will be required. It will be assigned a drive letter. Please confirm that this assigned drive letter does not conflict with any network, logical or physical drives in the system.

### **For New Drives**

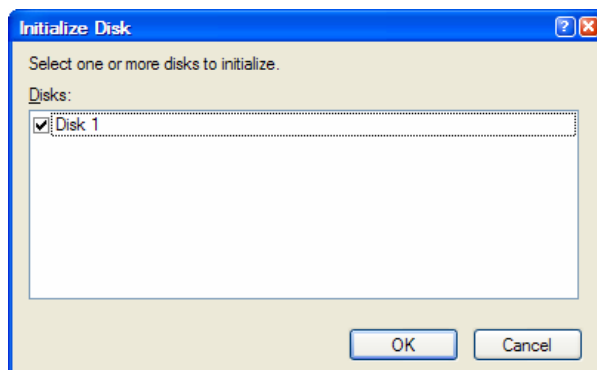
Right click on the “My Computer” Icon and select “manage” from the popup menu.

The “Computer Management” window will now open. On the left panel of the window select “Storage” and then “Disk Management”. A view of all attached drives will be shown in the right hand panel of the window.

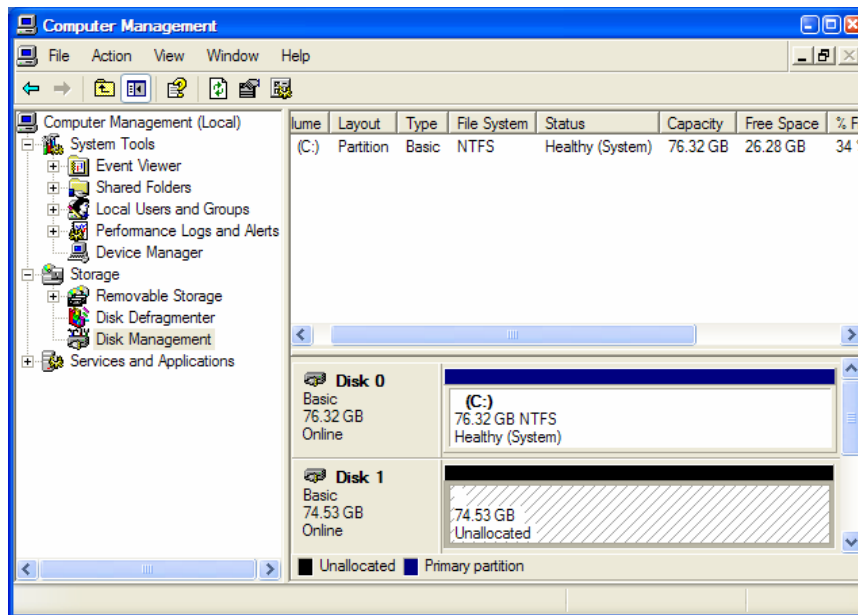


The New hard drive will be shown showing the size and the fact that the drive is unallocated.

Right Click on the word Unknown and choose initialise disk.



Check all new disks, then click OK.



Right click on the unallocated partition and select “New Partition...” (XP) or “Create Partition...” (W2K) from the popup menu.

The “Create Partition” Wizard will appear. Please read each step carefully. The information displayed will help you decide how to set the hard drive partition(s) up to best suit your needs.

From the Welcome window, click next.

Select “Primary Partition” (Default) and click next.

The Partition size will default to actual size of the drive. Click next.

*You can change the partition size here and create a second or even more partitions on a single drive. This is only for advanced computer users and should be used with caution.*

Assign a drive letter the system will use when the drive is connected. This will default to the next free drive letter not currently used by the system. You may use any unused drive letter. Please confirm that this assigned drive letter does not conflict with any network, logical or physical drives in the system.

Click next.

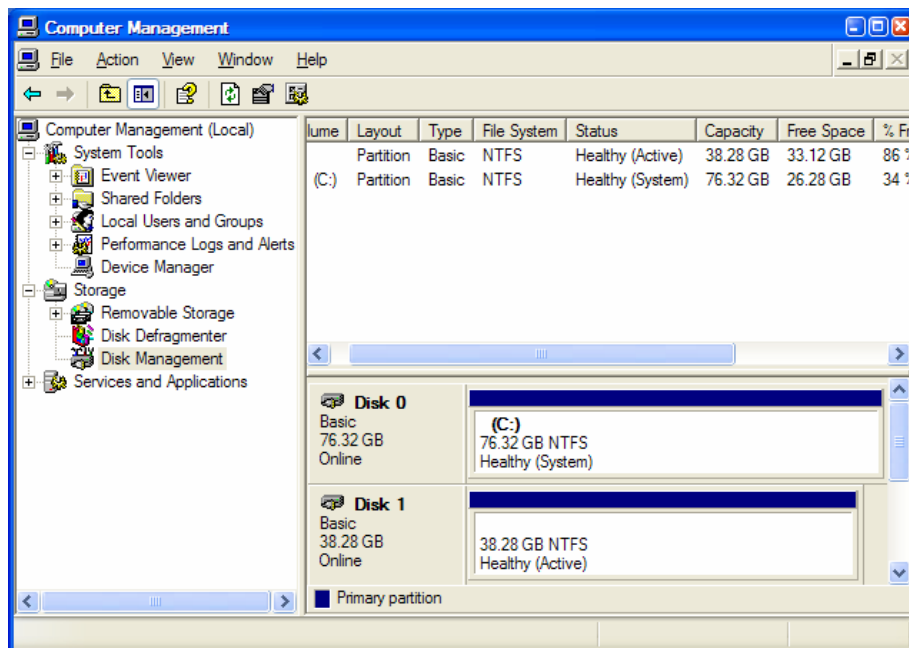
Formatting the partition. This window will default to the following.....

File system:	NTFS	<i>Leave as default</i>
Allocation unit size:	Default.	<i>Leave as default.</i>
Volume label:	new volume	<i>Change as required.</i>

Click next. A summary page will open. Please check that all the settings are correct. You can go back and make changes if required.

If the settings are correct click FINISH. Formatting will now commence. This may take a while. The time will vary depending on the size of the hard drive.

When the formatting is complete, The drive will be shown in the “Computer Management” window and should shown as “healthy”.



Close the “Computer Management” window and open “My Computer” window. The new hard drive should now be available for use.

## Formatting a hard drive on a Windows 98SE

Partitioning and formatting a hard drive under WIN98 is more complex due to the limitations of the operating system. It can be completed much easier if done on an XP/2000 machine. Just ensure that the file system selected for formatting is FAT or FAT32 only as a Windows 98 machine can not read an NTFS file system.

Fit the hard drive to the external case as described above. Follow the instructions supplied with the case for installing the drive. Connect the case to the PC.

When the case is connected and the drivers have been installed. A “Connected USB Device” Icon will be shown in the system tray in the lower right hand area on the screen.

Right click the “My Computer” Icon and select “Properties” from the popup menu. Click on the “Device Manager” tab at the top of the “System Properties” window.

Expand the “Disk Drives” list by clicking on the cross next to the disk drive icon. It should now display all hard drives attached to the computer, including the one attached via the USB port.

Close all windows and programs before proceeding to the next step.

*Please Note:*

*According to Microsoft KB article [Q263044](http://support.microsoft.com/default.aspx?scid=kb;EN-US;q263044), "When you use Fdisk.exe to partition a hard disk that is larger than 64 GB (64 gigabytes, or 68,719,476,736 bytes) in size, Fdisk does not report the correct size of the hard disk.*

*(<http://support.microsoft.com/default.aspx?scid=kb;EN-US;q263044>)*

*The size that Fdisk reports is the full size of the hard disk minus 64 GB. For example, if the physical drive is 70.3 GB (75,484,122,112 bytes) in size, Fdisk reports the drive as being 6.3 GB (6,764,579,840 bytes) in size."*

Also: Formatting the hard drive while within Windows may result in the hard drive only being formatted to 8.5GB due to the limitations of the operating system.

With all windows and programs closed, open the START MENU>PROGRAM FILES>MS-DOS PROMPT. This will open a DOS window and allow you to type commands.

At the command prompt (**C:\windows>**\_ ) type **CD\** and then press the enter key.

The command prompt should now show **C:>\_**

Type **Fdisk** and then press the enter key.

After you press ENTER, the following F-Disk Options menu is displayed:

1. Create DOS partition or Logical DOS Drive
2. Set active partition
3. Delete partition or Logical DOS Drive
4. Display partition information
5. Change current fixed disk drive

(Note: Option 5 is available only if you have two physical hard disks in the computer.)

Select Option "5" as Fdisk will always default to the first hard drive.

Select the hard drive that you wish to partition and format. This will return you to the option screen above.

### Create a Partition

at the prompt 'Enter choice: [ 1 ]

press the 1 key on the keyboard and press <enter>

you will see a new screen

=====  
**Create DOS partition or Logical DOS drive**

**Current fixed disk drive: 2**

**Choose one of the following:**

- 1. Create Primary DOS Partition**
- 2. Create Extended DOS Partition**
- 3. Create Logical DOS Drive(s) in the Extended DOS Partition**

Enter Choice : [ 1 ]

=====  
Select choice 1 by pressing the 1 key on the top of the keyboard and press <enter>

you will see....

=====  
**Current fixed disk drive: 1**

**Do you wish to use the maximum available size for a Primary DOS Partition and make the partition active (Y/N).....? [ Y ]**

=====  
Choose Yes by pressing the Y key on the keyboard and pressing enter.

*Advanced Users Only: If you select N, then you will be given the option to select an alternate size using percentages or actual size.*

Close the DOS window and restart the computer.

## Formatting the hard drive

When the computer has restarted, open the “My Computer” icon. The new drive should now have allocated a drive letter and should be showing as an icon. At this point, you will not be able to access the drive as it still needs to be formatted.

Right Click on the new drive and choose Format... from the Pop Up Menu

The window will default to the following.....

Capacity:	Size	<i>Leave as default</i>
File system:	NTFS	<i>Leave as default</i>
Allocation unit size:	Default.	<i>Leave as default.</i>

Volume label:

*Change as required.*

Click Start. Wait for the message stating that the format has completed successfully.

The hard drive is now able to be accessed and used.

*If the reported hard drive size is only 8.5GB, even though the hard drive is an 80GB model, the partition may have to be deleted and the unit done on a PC using XP or Win2000*