



MP3 Player
with FM Radio, Voice Recording
& LCD Display

MP3-A2G

User Guide

This is a new generation media player, which supports MP1, MP2, MP3, WMA, ASF or WAV files. Its perfect tone and high reliability with refined exterior design gives you outstanding performance.

Overview

- Refined exterior design

Unique design fits your hands.

- Multi file format support

This player recognises MP1, MP2, MP3, WMA, ASF or WAV files. Files must be free of copy protection.

- Telephone Book

Build-in convenience, portable address book.

- e-Documents

You can download text files into the player and read it any time as you like.

- Driver free USB memory

Manage your files in USB memory without software installation under WIN2000 or later operating systems.

- Recorder / Repeat

Voice can be recorded and saved in WAV or ACT format. Phase/Contrast repeat available.

- Equalizer

Normal, Rock, Pop, Classic, Soft, Jazz, Bass

- 2 colours LCD

This player has a 2 colour LCD.

- Play modes

Normal, Single Repeat, Play folder, Repeat folder, Repeat All, Shuffle, Lyric.

- Timing turning off

The player provides Sleep and battery saving mode, which is more convenient for you!

- Completed dynamic menu

Visualized dynamic menu with text instructions makes an easy control.

Declaration

- * Thank you for your purchasing this product.
- * Please read this manual carefully before using your new player.
- * Contents in this manual may change possibly for better service.
- * We reserve the right to make changes to this manual without notice.
- * The pictures and diagrams used in this manual are a guide only and may vary to the actual product.

Contents

Overview.....	2
● Declarations.....	2
● Know your player.....	5
Exterior and Keys.....	5
Display.....	5
Battery.....	5
● Basic Functions.....	6
Access to Menus.....	6
Scrolling.....	6
List of Menus.....	6
Volume Adjust.....	7
Power On/Off.....	7
Play & Stop.....	7
Recording / Pause.....	7
● Keys Processing.....	7
Keys function definition.....	7
Keys processing definition.....	7
● Play music.....	7
Quick start.....	7
Equalizer mode.....	8
Lyric Settings.....	8
How to display lyrics.....	8
● Voice Recorder.....	9
Recording on 'Record Mode'.....	9
Recording mode.....	9
Voice control.....	9
● Play recorded files.....	9
● Convert ACT into WAV.....	10
Convert ACT into WAV.....	10
● Settings.....	11
How to enter settings.	11
Option introductions.....	11
'Recording time'.....	11
'Screensaver'.....	11
'Language Setting'.....	11
'Turn off" Setting'.....	12
'Repeat Setting'.....	12
'Contrast Adjust' Setting.....	12
'PC connection Setting.....	12
'Memory Status' Setting.....	13
'Firmware Version' Setting.....	13
'Upgrade Firmware' Setting.....	13
● E-Documents.....	13
Choosing e-document.....	13
● Telephone Book.....	13

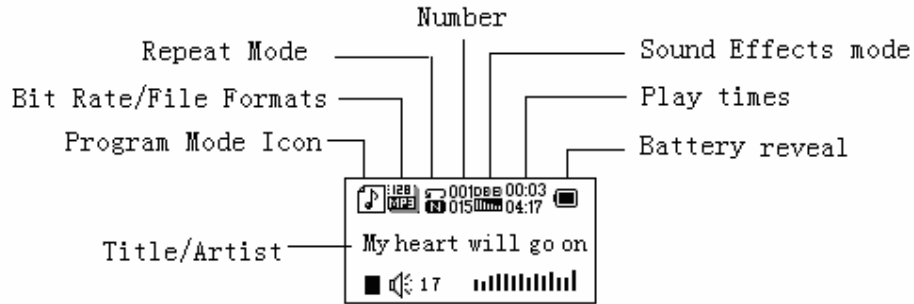
How to find telephone information.....	13
Create and edit telephone book.....	13
Edit tel. book	14
Import & Export.....	15
● Using USB Disk.....	15
● Upgrade Player.....	16
● Change Folders.....	17
● Delete Mode.....	18
● Play Mode.....	19
● Tempo rate.....	19
● Repeat Mode.....	19
A-B Repeat.....	19
Karaoke.....	19
Contrast Function.....	19
Repeat Times.....	19
Repeat Interval.....	20
● Radio feature.....	20
● Troubleshooting.....	20
● Technical Specifications.....	21

● **Exterior and Key**



- | | |
|--------|------------|
| ● PLAY | ● NEXT |
| ● MODE | ● EARPHONE |
| ● REC | ● ON/OFF |
| ● VOL | ● USB |
| ● LAST | |

- **Displayer**



- **Battery Level**

The player shows capacity in 9 levels

- Battery is full on 3.7v. As time goes on, capacity indication will diminish.
- Indicator shows blank when battery almost discharged. You should charge your battery at that time.



Please switch on the player before charging. This player cannot be charged when switch is in the off position.



Please switch off the player when it is not to be used for long periods.

Basic Functions

- **Access to Menus**

Press **Mode** to access menus.

- **Scrolling**

- Scroll music, menus
- Fast Forward / Reverse when playing music.

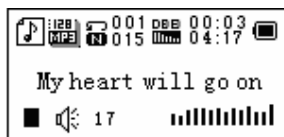
- **List of Menus**

To access different menu functions from main menu.

Main menu: (Hold **Mode** to access)



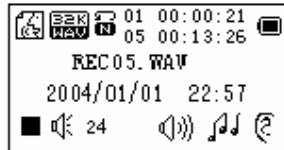
Music Mode:



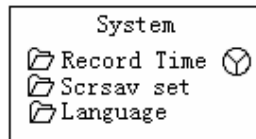
Recorder Mode:



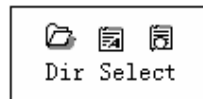
Play Mode:



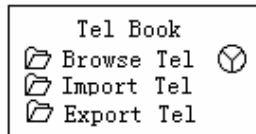
Settings:



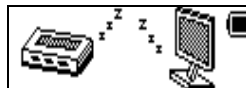
E-Documents:



Telephone book:



USB Mode (Connect to PC):



- **Volume Adjust**

Press **VOL** to access volume adjust, press **Next/Last** to increase or decrease volume.

- **Switch on/off**

Press and hold **Play** to switch on when the player is off.

Press and hold **Play** to switch off when the player is on.

- **Play & Pause; exit from submenu**

On music mode, Press **Play** to play music.

When playing music, press **Play** to pause; press and hold to stop playing.

- **Start / Stop recording**

On recording mode, press **Play** to stop.

Keys Processing

- **Keys Functions Definition**

- 1 . **Play**: Power On/Off, Play, Pause, Stop
- 2 . **MODE**: Enter main menu or exit from current menu.
- 3 . **VOL**: Volume Adjust
- 4 . **REC**: Enter recording mode.
- 5 . **Next**: Next, FF, Volume increase
- 6 . **Last**: Previous, Rev, Volume decrease
- 7 . **USB**: USB outlet
- 8 . **ON/OFF**: Power switch
- 9 . Earphone: Standard earphone outlet (3.5mm)

- **Key Processing Definition**

Keys processing includes 4 actions: Press, Press and Hold, Push, Hold. **If not mentioned, all actions are Press.**

Press: Press a key and valid immediately;

Press and Hold: Press a key and hold it at least 1.2s this action valid only once.

Push: Press a key, and valid when released.

Hold: events occur in such frequency then the key is holding such as Fast Forward and Reverse.

4、Play music

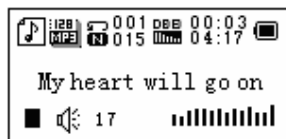
- **Quick Start**

1. Put earphone plug into earphone outlet;
2. Press and hold **Play** to switch the player on, then enter Music Mode and press **Play** to play music.
3. Select a music: **Last**: Previous file;
Next: Next file.

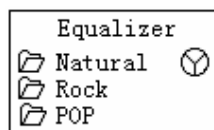
Volume adjusts: Press **VOL** to change volume, press **Next** to increase or **last** to decrease.

- **Equalizer Mode**

1. When playing music



2. Press **Mode** to enter play submenu;
3. Press **Next** choosing Equalizer Mode;
4. Press **Mode** to enter 'Equalizer Mode' submenu.



Select an equalizer:

5. Detail of each equalizer (EQ):

Natural
Rock
Pop
Classical
Soft
Jazz
DBB

6. Push **Next** to select an EQ and press **Mode** to confirm.

- **Synchronous Lyric Display**

The player supports lyric files with *.LRC suffix, and displays synchronously.

How to use lyric files

Please make sure the lyric has the same name to the music

For example:

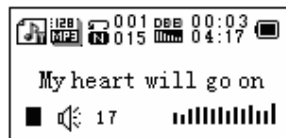
Music file: My heart will go on.mp3

Lyric file: My heart will go on.lrc

If lyric file is available.

If lyric matched, the icon "🎵" will be replaced into "🎵📄".

1. When matched lyric available :



2. Press and hold **Mode** to enter lyric interface;
3. Lyric displays
4. Press **Mode** return to music mode.

Voice Recording

Please make sure the battery has enough capacity before making record.

Each folder can save up to 99 voice recording files.

- **Recording on "Record mode"**

1. .Enter main menu:



2. Press **Next** scroll to Record mode
3. Press **Mode** to select Record mod, screen will display as below:



4. Press **Play** to start recording.



Voice will be recorded in current folder which is set through 'Record stop / Main fold'



If “Memory full” is displayed, it means there is no space to save new record files, please delete other files to release memory space.



If “Fold full” shown, it means there are 99 record files in this fold. Please choose another one.



The player only responds to **Play** and **A-B** when in recording process

- **Select Record Type**

1. When in the interface of ‘Record stop’
2. Press **Mode** to enter record submenu
3. Press next scrolling into ‘Record type’ submenu then presses **Mode** to select it.

Fine record	wav file , fine quality
Long-time record	act file, normal quality
Fine voice control	wav file, (Recording controlled by voice, pause when mute)
Long-time voice control	act file, (Recording controlled by voice, pause when mute)

4. Press **Next** to choose appropriate type and press **Mode** to select it
5. Press **Play** to start recording.

Play recorded files

1. Enter main menu
2. Press **Next** to choose ‘Play mode’
3. Press **Mode** to enter playing interface
4. Press **Play** again to play the file.
5. Choose voice record files.

Last: Select previous file;

Next: Select the next file;

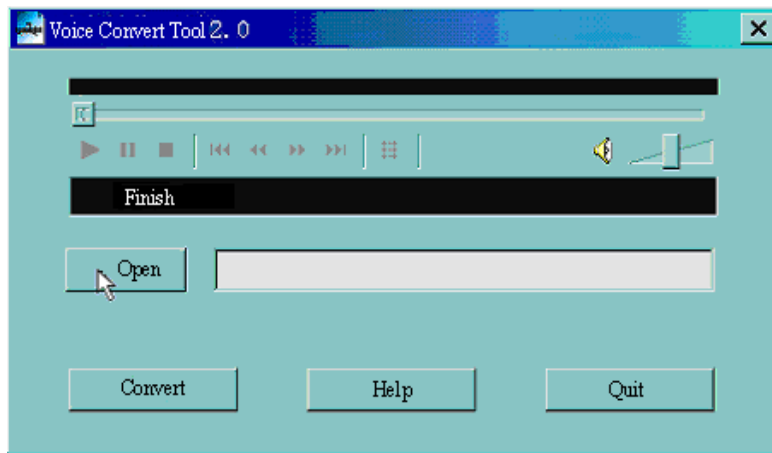
6. Volume control

Press **VOL** to access volume adjust, press **Next/Last** to increase or decrease volume.

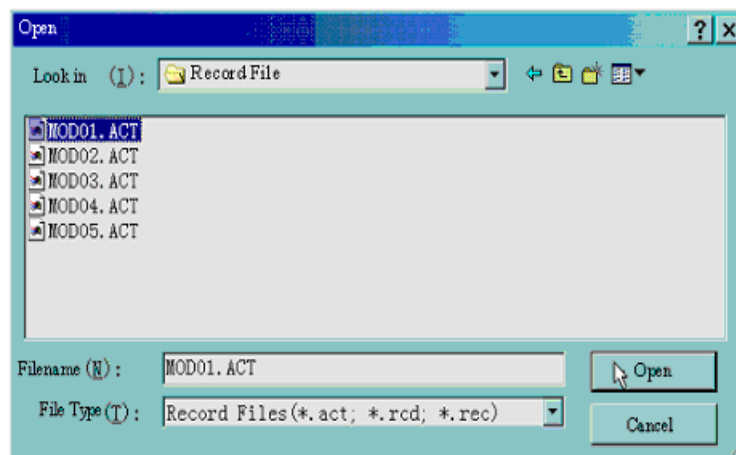
Convert ACT Files into WAV format

The ACT file which is produced by this player can be converted into WAV format by using software provided.

1. Imply “Sound Converter” program. Click “OPEN” button



2. Select the .ACT files you would like to convert



3. Click 'CONVERT' button, the program will start converting



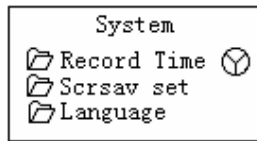
PS: This tool can also play WAV and MP3 files.

Settings

- **Enter Settings**

You can set system performances here, options may vary in different firmware version

1. Enter main menu
2. Press **Next** Scrolling into "Settings"
3. Press **Mode** to enter.



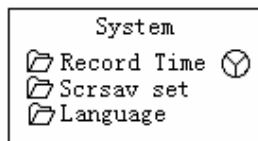
● **Options introduction:**

(Recording Time)	Setting date and time when saving recorded file
Next (Screensaver)	Screensaver setting
(Language)	Choosing different languages
(Timing shut off)	Setting a countdown time in minutes, the player will shut off when time out.
(Repeat Setting)	Setting repeat status
(Contrast Setting)	Setting display's contrast
(online mode)	Options for PC connection
(Memory Status)	Check memory space and usage status
(Firmware Ver.)	Version of player's firmware
(Upgrade Firm.)	Use for upgrade firmware
(Exit)	Exit from Setting interface

● **List of menus:**

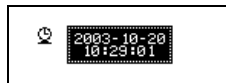
● **'Recording time' Setting**

1. System setting interface



2. Press **Mode** to enter 'Recording time' interface

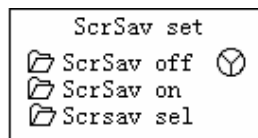
Recording time:



3. Press **VOL**. The Years figures will flash.
4. Press **Next** the value will increase **Last** to decrease.
5. Push **VOL** to change month, day and time as require.
6. Press **Next** the value will increase **Last** to decrease for each.
7. When time and date is correct, press **Mode** to exit.
8. This will reset if player turned off using ON/OFF switch.

● **"Screensaver" Setting**

1. Press **Mode** enter screensaver setting;



2. Press **Next** for choosing (**Last** for previous)
3. After setting, press **Mode** to exit.

● **Language Setting**

-
1. Press **Mode** to enter language selection
 2. Press **Next** or **Last** to scroll through to the required language
 3. Press **Mode** to make the selection

•"Turn off" Setting

Please note:

You can set time in seconds on 'Battery Saving' mode, allowing the player shut down automatically when player stops and is idle for the period you have set. This function is void if the time set to 0.

You can set time in minutes on 'Sleep mode', allowing the player to shut down automatically when the player becomes idle (regardless of current status) for the period you have set. It is designed for listening to music before sleep. Please note: Sleep mode is valid only once after setting, you have to reset it to re use this feature.

•'Repeat Settings'

Please see 'Sound Setting'

Note: In "Manual Mode" you should set the repeat point manually.

In "Automatic Mode" the player can identify sentence automatically when on A-B repeat. (This function is designed for repeat sentences in language studies.)

•'Contrast Adjust'

Please consult into 'Backlight time setting'

•'PC connection' Setting

Please see 'Sound Setting'

Some operation systems (Windows 2000 SP4 or prior) may not recognise a USB disk with two partitions. Therefore, you have to choose an active disk when using 'Secret Space' which is the only active disk that can be found in your PC.

•'Memory status'

You can check total memory space and the percentage of usage.

•'Firmware version'

You can find the player's firmware's version.

•'Firmware upgrade'

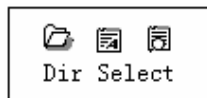
Used for upgrading the firmware of this player.



Tips: Press Play can exit current menu quickly. The function is valid on all other menus.

Reading Documents

On main menu, press **Next/Last** choosing e-Document, press **Mode** to enter corresponding submenu:



- Select Folder: Select the root directory of flash disk.
Press **Mode** to enter 'Select Folder' interface, press **Mode** to select a file.
Note: You do not need to select a folder if the file you want to read is in root directory.
- To select a file, please see 'Select folder' instructions.

- Press **Next** to choose 'Read document', then press **Mode** to confirm. While reading, press **Next** or **Pre** to scroll.

Using Telephone Book

- How to find telephone information?

In the main menu, press **NEXT** to choose Telephone Book, press **Mode** to enter. Detail of the submenu lists below:

1. Browse TEL
2. Import Tel File
3. Export Tel File
4. Exit

Press **NEXT** choosing Browse TEL, press **MODE** to enter.

Press **NEXT** scrolling to the object you need to refer, press **MODE** to exit.

Browse TEL: Check the contact which you imported into, including Name, E-mail, Mobile, QQ, Telephone, Fax etc. (Available only Telephone book has been stored. Otherwise you will receive warning: No File! Press and hold **MODE** to exit!)

Import Tel File: Import Telephone book file from PC to player.

Export Tel File: Export Telephone book file from player to PC.

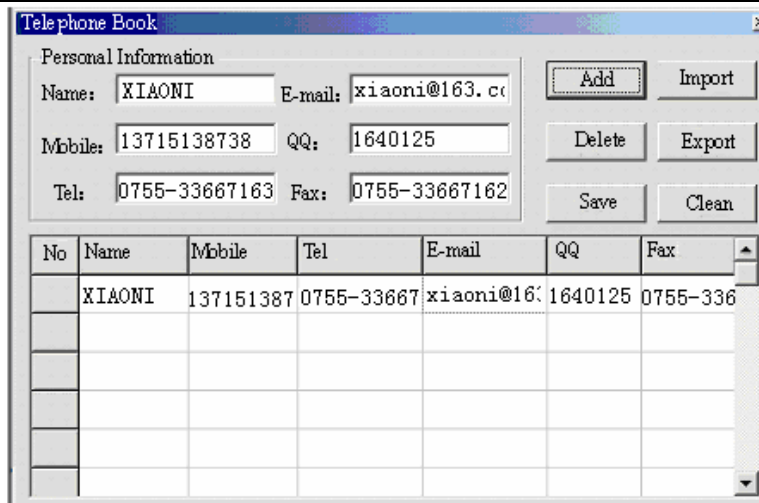
- Create and Edit Telephone Book File
- **Create a Telephone Book file**

The Telephone Book file can be created by software tools provided and must be installed on your PC.

1. Execute 'Telbook_Ch', click 'OPEN'

The screenshot shows a window titled 'Telephone Book'. At the top, there's a 'Personal Information' section with several text input fields: 'Name:', 'E-mail:', 'Mobile:', 'QQ:', 'Tel:', and 'Fax:'. To the right of these fields are six buttons: 'Add', 'Import', 'Delete', 'Export', 'Save', and 'Clean'. Below the input fields is a table with the following columns: 'No', 'Name', 'Mobile', 'Tel', 'E-mail', 'QQ', and 'Fax'. The first row of the table is highlighted in blue, indicating it is selected. The table is currently empty of data.

2. Input information in term of dialog box, then click 'ADD', a new contact will be created.

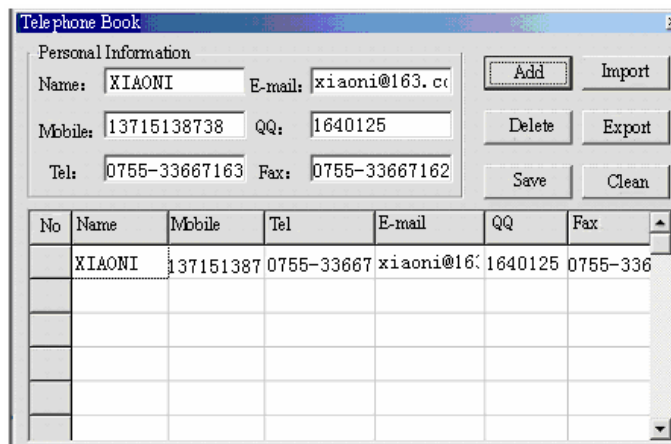


3 . Click 'SAVE', a file named 'TELBOOK' will be created in the player. The Telephone Book file will be created.

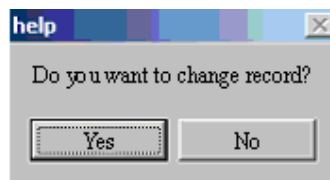
- **Edit Telephone Book file**

If you need to change contact details, you can do it as shown below:

1. Click the column where the contact you need change at, then you will see the detail of such contact:



2. After edit, click 'increase', you will receive a reminder:



3. Click to confirm edit, you will find 2 records of the same person.



: If you change the contact's name, a new record will be created.

- **Import and Export Telephone Book:**

This function allows you import a telephone book to your MP3 player from PC:

- Create Telbook. bin by using provided Tel. book editor Telbook.exe
- Connect the player by USB cable, copy telbook.bin to root directory of MP3 player.

- Switch the player on and enter 'Import Tel file'
- Import telbook.bin into player Export Telephone Book: This function allows you export the Telephone Book file so it can be edited on the PC:
- Switch the player on and enter into 'Export Tel file'
- Confirm the files which want to export.
- Connect USB cable , Find telesave.bin in root and it can be copied and edited on PC

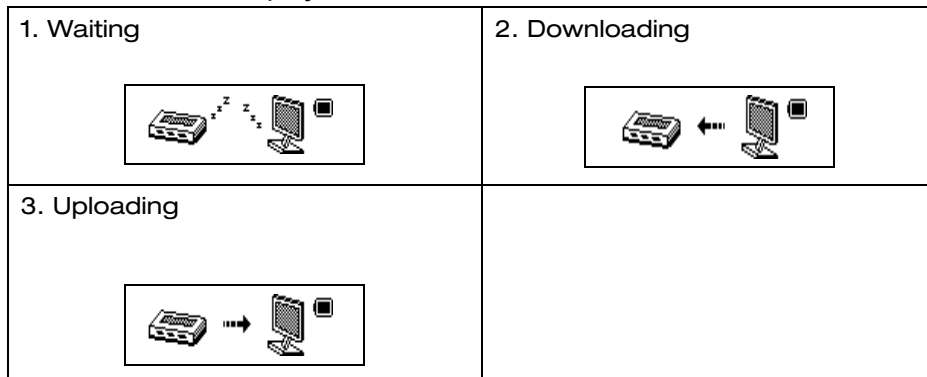
9、 Using USB Disk

This player is also a standard USB disk which is supported by Windows98 (driver needed), Windows 2000 or above (no driver needed), Mac OS 10.3, Red hat Linux 8.0 or above.

The player can operated when connected to the USB port. To operate, when in 'waiting mode' press **Mode** return to main menu and choose the operation you need.

This player supports Suspend mode.

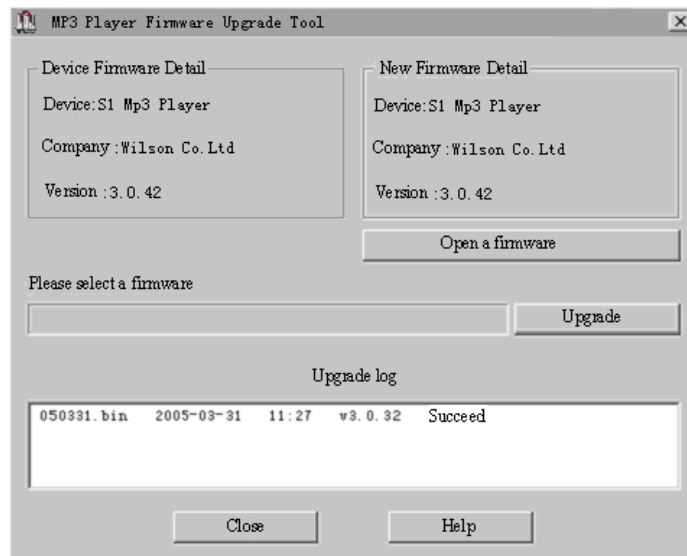
When connected to PC, The player works in the three modes below:



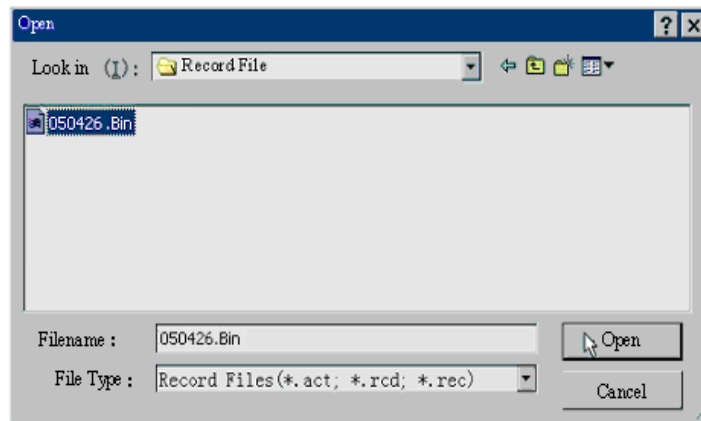
10、 Upgrade your player

You can use PC software to maintain or upgrade player's firmware.

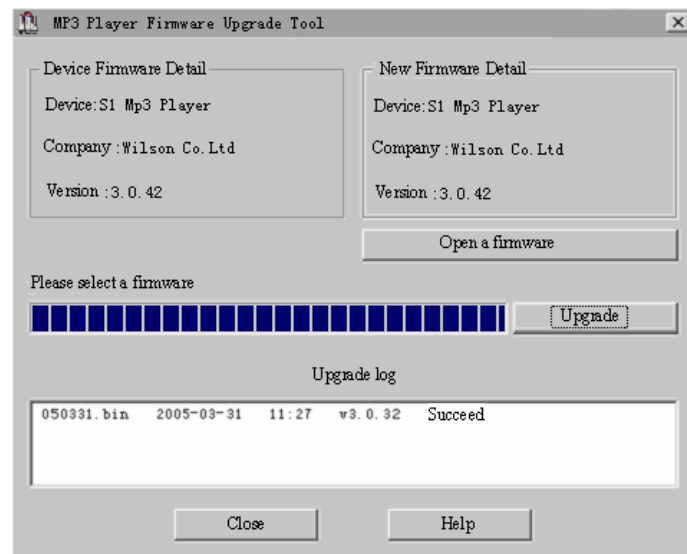
1. Enter main menu
2. Push **Next** scrolling into 'Settings'
3. Push **Mode** to enter 'Settings' submenu.
4. Push **next** scrolling into 'Firmware upgrade' and push **Mode** to enter.
5. Connect player to PC
6. Running upgrade tools *MP3 Player Update*, then click 'Choose new firmware';



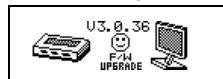
8. Select a firmware file. (Can be found in CDROM provided or downloaded from the Internet)



9. Click 'Start Upgrade', the upgrade will be in process.



10. Once the firmware is upgraded successfully, the following warning will be displayed.





Firmware upgrade is to improve player's performance; but you can still use it normally without any upgrade. Using incorrect firmware on this player will make the player inoperable and void the warranty.



Player may not work if upgrade fails. Player must not be disconnected or turned off during the upgrade process. Please read this manual carefully before doing firmware upgrade. Firmware should only be upgraded if recommended by LaserCo tech support.

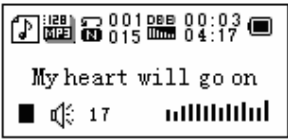

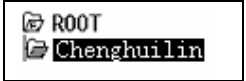



The upgrade software cannot be used for other player and devices.

Other settings

- **Choose other folder (Stop submenu)**


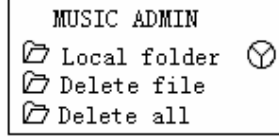
You can separate files into several different folders that ease to manage them (folders should be created on PC). The player can identify 9 folders in the root directory

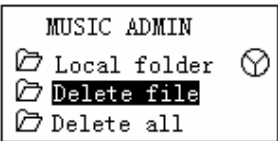
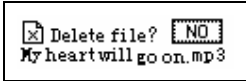
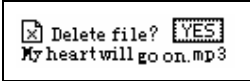
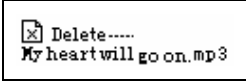
<p>1. When stopped</p> 	<p>2. Press Mode to enter Stop submenu</p> 
<p>3. Press Mode to enter folder choosing interface</p> 	<p>4. Press Next or Last to choose a folder</p> 
<p>5. Press Mode to enter the selected folder</p>	

Please note: You can set folders independently in Music / Recorder / Play mode

- **Delete file (Stop submenu)**

You delete correspond files/channels in each Music/Play modes.

<p>1When Stopped.</p> 	<p>2.Press Mode to enter Stop submenu</p> 
<p>3.Press Next or Last to choose 'Delete file' or 'Delete all'</p>	<p>4. Press Mode to enter delete interface.</p>

	
<p>5. Push Next to choose "YES"</p> 	<p>6. Press Mode to confirm delete</p> 

'Delete all' will delete all files in current folder of current mode. I.e. Choose 'Delete all' in Music mode will delete all music files; recorder files will not be affected.

Play mode (Play submenu)

You can choose different play modes (i.e. repeat, shuffle) when playing music or recorded files.

The first option on Play submenu is 'Play mode'

• REPEAT

Normal	Playing music files in sequence until the end of folder
Repeat One	Repeat single music file
Folder	Play all music files in folder
Repeat Folder	Repeat all music files in folder
Repeat All	Repeat all music files

•SHUFFLE

Random	Play music files in folder randomly
--------	-------------------------------------

•INTRO

(Intro)	Play the 10s of each music files in sequence
---------	--

• Play speed (Play submenu)

You can adjust playing speed of music. (Only valid to MP3 files)


1. While playing music
2. Press **Mode** to enter play submenu
3. Press **Next** scrolling to 'Play speed' option
4. Press **Mode** to enter
5. Press **Next** for faster, **Last** for slower

• Repeat mode (Play submenu)

Press **Mode** to enter or

Enter from Play submenu:

• A-B Repeat

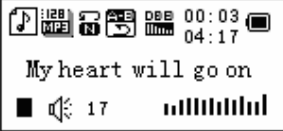
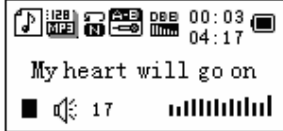
1. When play music or recorder
2. During playback press **REC** to mark beginning (A) of repeat and the symbol should appear 
3. When the end of section to be repeated is reached press **REC** to mark it.
4. The marked area of the file will continue to repeat until stopped.

5. Press **Play** to end the **A-B** repeat mode



In repeat mode, you can press **VOL+** or **VOL-** to adjust playing speed

• **Karaoke Mode (Not available in Play back mode)**

<p>1. A-B repeating</p> 	<p>2. Push Next enter Karaoke mode</p> 
<p>3. Repeat symbol '🔄' will be replaced to karaoke symbol '🎤'. Player begins recording voice to the length of A-B repeat period.</p>	<p>4. Upon time reaches, player resume play music file and the symbol replaced to '🔄', push Next enter contrast function.</p>



Press **Last** to return to Repeat A-B status.

• **Contrast Function (Not available in Play back mode)**

1. When in contrast function, the repeat symbol displayed as "🔄", the original sound will be played.

2. When finish original, repeat symbol will be replaced with "🎤", Player will play the voice recorded.



Press **Last** to return to 'Karaoke mode'



Press **Mode** to exit repeat mode for the above three modes.

• **Repeat times (Play submenu)**

Please consult into 'Backlight time setting'

Repeat time determines the times of play **A-B** repeat until exit

• **Repeat interval (Play submenu)**

Please consult into 'Backlight time setting'

Repeat interval determines the time period between previous repeat (in seconds).

• **Radio Feature**

1. From the menu, use the **NEXT** or **LAST** Buttons to scroll to the radio icon and then press the **Mode** button.
2. Press the **Next** or **LAST** buttons to tune the radio in small increments.
3. Press and Hold the **NEXT** or **LAST** buttons to Auto tune to the next station.
4. To auto tune available stations press the Mode button. Scroll through to the Auto tune option and press the **Mode** button. The radio will now scan all available stations in your area. To change the station, press the **Play** button.

Troubleshooting

No Power	Make sure you have switched the player on.
No Sound	Make sure volume is not in 0 position and earphone is plugged in.
Unreadable characters on display	Make sure you have chosen the correct language.
Data cannot be transferred between the player and PC	Check USB cable, and make sure the player is properly connected to your PC. Check if the driver has been correctly installed. Make sure there is enough memory for data.
File Format Error during playback	Ensure that file copied to the player are free of any copy protection.
Disk Error	File system may be corrupted. Please format the player in FAT or FAT32
No Radio	Earphone must be fitted to the player to use this feature. Change location for better reception.

For further information and troubleshooting tips please visit

<http://www.lasercos.com.au/downloads.htm>

Technical Specifications

Dimension	57mm X 31mm X 12mm	
Weight	31g	
Screen	Matrix (128*64) Liquid Crystal, 2 colours LCD	
Connect to PC	High Speed USB2.0	
Memory	128MB - 4GB Flash	
Power Supply	Max 5 hours play mode (approx 3 hours recharge time)	
Voice Recorder	Sample rate	8KHz
	Format	WAV (32K bps), ACT (8K bps)
	Time	35hours (ACT, 128M Flash)
MP3, WMA, ASF	Max. Output	(L) 10mW + (R)10mW (32Ohm)
	MP3 Bit rate	8K bps - 320K bps
	WMA ASF Bit rate	5K bps - 384K bps
	Freq. Response	20Hz to 20KHz
	SNR	85dB
	Distortion	
FM radio	Receiving frequency range	87MHz - 108MHz
	Stations saved	20
	Max. Output	(L) 10mW + (R)10mW (32Ohm)
	SNR	45dB
Supported Music Formats	MP1, MP2, MP3, WMA, ASF, WAV	
Operate Temperature	-5 to 40 degree	
8 Languages Display	Simplified Chinese, English, Traditional Chinese, German, French, Italian, Spanish etc	
Supported Systems	Windows98/SE/ME/2K/XP, Mac OS 10, Linux 2.4.2	

Please note: Design and characters may change without prior notice.